

PRODUCT LINE CARD

8150/8146 Series

- Largest Global Certifications on the market
- FRP and Stainless varieties suit your needs
- Temperature range as low as -60°C
- Temperature range as high as +70°C
- Single gasket (not taped)
- Certified to add terminals and holes without voiding certification



Terminal Boxes, and Control Panels/Stations



EPiK, 8264 Series

- Completely Factory Sealed to 150 HP
- EPiK versions available in complete stainless steel
- Manual, across the line, combination, and reversing options available.
- Up to 500 VAC
- Class I Division 2, ATEX/IECEx certified



Motor Starters



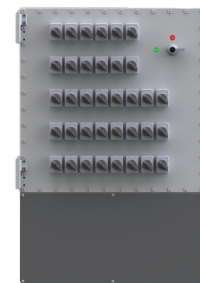
EPiK

EPiK, 8264 Series

- All versions factory sealed
- EPiK versions standard from stainless steel
- Available to 72 circuits
- Class I, Division 2, ATEX/IECEx certified.
- MLO and Main Breaker options (up to 225 A)
- Compact size



Breaker Panels



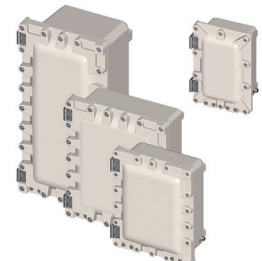
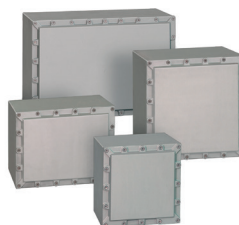
EPiK

CUBEX, GUBox

- Certified to Class I, Division 1
- Flat surface ideal for gangable enclosures
- Most sizes stock



Explosion Proof/Flameproof Enclosures



PurgEx Series

Full Line of Z, Y, and X Purge controllers and indicators.

- Smallest Y, Z Purge on the market
- Brilliant LED indicating correct pressure.
- Ability to provide complete certified systems
- No vent needed on enclosures under IS cubic vent



Purge and Pressurized



CHiLR Series

Full line of explosion protected Air Conditioners

- Class I Division 2 up to 20,000 BTUH
- ATEX/IECEx Zone 2 Certified Units up to 12,000 BTUH
- ATEX/IECEx Zone 1 Certified Units up to 12,000 BTUH
- No Purge Required (but can be used with Purge)



Air Conditioners



SolConex

Interlocked Explosion Protected Plugs and Receptacles

- Class I Division 2 Certified
- ATEX/IECEx Zone 1 Certified
- Up to 600V
- Up to 125 Amp 4 pole 5 wire
- Lockout Tag Out Capable



Plugs and Receptacles



VFD's

- Explosion protected VFD's to up to 400 HP.
- Ability to design, and build to your requirements
- Zone 1/Division 1, or Zone 2/Division 2



VARIABLE FREQUENCY DRIVES



Clifford & Snell

- Smallest combination horn/strobe on the market
- Lowest energy consumption on the market (ie. 24 VDC = 570 mA)
- 110 dB
- 32 Selectable Tones
- 2-stage alarm standard
- Most units in stock



Horn/Strobe, Fire Alarm/ Pull Stations

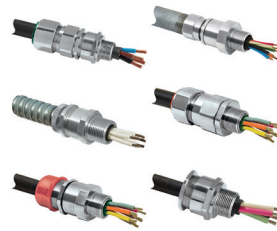


Fittings

- Complete Global Offering
- Cable Glands Stainless steel, brass nickel plate, brass, and aluminum varieties
- Armored and Unarmored varieties
- Potted, and unpotted
- Hubs, breathers, unions.
- Metric and NPT varieties



Fittings



TempEx

- Ideal for plant shut downs and turnarounds
- Full complement of custom temporary power solutions for hazardous classified areas
- Cubes, Master, and Slave units provide a comprehensive and safe means of distributing power throughout the worksite.



Temporary/Portable Power Units



Fully Certified Custom Panels

Let Stahl work with you to design, build, and certify your custom electrical panel.



PESO KOSHA TR-CU

Customized Certified Panels



HMI

- Thin Client, KVM, Panel PC with Sunlight readable options.
- Wide range of screen size 10 – 24".
- WDU option available
- 7" Operator Panel
- Extreme temperature range.



Operator Interface

SERIES 4XB – INNOVATIVE PC TECHNOLOGY FOR HAZARDOUS AREAS



Cameras

- ATEX/IEC Ex/NEC/CEC
- Smallest Compact Camera
- ONVIF, Pelco S interface
- HD, PoE options available
- Extreme temperature range
- Analog and IP



Camera/CCTV Systems

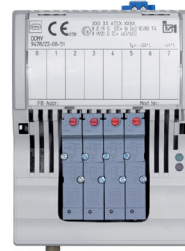


IS1+

- Class 1, Division I solution without Purge or explosion proof enclosures.
- Open Protocols – Ethernet/IP, Profibus DP etc.
- Digital Output integrated with Pilot Valve
- All modules are hot-swappable even in C2D1
- ATEX/IEC Ex versions also available.



Remote I/O

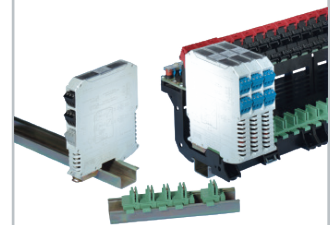


Intrinsipak, ISPac

- Zener Barriers for all applications
- Barriers with removable fuse
- Galvanic Isolators for all applications
- ATEX/IEC Ex/NEC/CEC



Intrinsically Safe Barriers and Isolators



R. STAHL, INC
13259 N. Promenade Blvd
Stafford, Texas, USA 77477
T +1 800.782.4357

R. STAHL, LTD
7003 56 Avenue
Edmonton, Alberta, Canada T6B 3L2
T +1 877.416.4302