



Trusted sales and engineering support since 1929!





INDUSTRIAL I/O SOLUTIONS, SIGNAL CONDITIONERS

Signal Conditioning - Transmitters/Alarm Relays - Smart I/O Modules
Ethernet, Profibus, Modbus Modules, Converters & Switches.



MASS FLOW METERS

Laminar mass flow meters, controllers and pressure controllers,
NIST traceable, lifetime warranty.



CONTROL COMPONENTS

Circuit breakers, enclosures, safety relays, wire ducts,
DIN rail terminal blocks, push buttons,



ANALYTICAL SENSORS & INSTRUMENTATION

pH, ORP, Conductivity, Resistivity, Dissolved Oxygen and Flow Sensors &
Instruments. Direct sensor replacements for GLI and others.



ANALYTICAL SENSING & CONTROL

Water Quality Monitors and
Combustible Toxic Gas Monitors.



INDUSTRIAL ENCLOSURES

Robust Non-metallic Polycarbonate UL Listed Industrial Enclosures. Sizes
from 6 x 6 x 4 through 18 x 16 x 10 with all UL/cUL508A & 50E,
IP66, IP68 and Nema 4X Certified.



PORTABLE PLATFORM SCALES

Fork Lift Scales, Crane Scales, Truck Scales, Portable Axle Weighers,
Light Vehicle Scales, Airport Scales, Portable Platform Scales,
Environmental Bench Scales.



TRANSDUCERS

Position Transducers, LVDT Gaging Products,
Industrial Pressure Sensors, Industrial Vibration Sensors.



MATERIAL HANDLING & ELECTRONIC COMPONENTS

Speed Monitoring/Switches, Alignment Sensors,
Hazard Monitoring, Temperature Sensors, Level Indicators, Safety Switches



RECORDERS AND CONTROLLERS

Loop Controls (1/32 DIN through 1/4 DIN)
Recorders (Circular, Strip & Paperless)
SCADA Software and Touch Screen Control Systems.



INDUSTRIAL PC KEYBOARDS & INPUT DEVICES

Pc Keyboards & Input Devices for Heavy Duty IP68, NEMA 4, Hazardous Loca-
tion, Chemical, Wash Down Food Processing, Laboratory & Medical



PROCESS WEIGHING

Weight & Rate Controllers, Indicators, PLC Modules, "C2" Load Cells,
Junction Boxes, Bench Scales & Floor Scales. Sensors and Instrumentation



CONTROL AUTOMATION

Timers, Relays, Push-Buttons, Display Lights, Terminal Blocks,
Sockets and PLC. HMI Interface Displays, Open Net Control.



SENSEANYWHERE REMOTE MONITORING

Reliable, cost effective, and simple solution for tracking critical
environmental conditions, including temperature, humidity, and CO2.



MEASUREMENT & CALIBRATION SOLUTIONS

HART® Communicators, Manometers, Digital Manometers
Gauges and Transmitters, Averaging Pilot Tubes, Laminar Flow



INDUSTRIAL COMPUTERS / PC MONITORS / TOUCH SCREEN HMI

Panel Mount Touch Screen Industrial Computers / Node PCs / Industrial
Flat Panel Touch Screen Monitors, Graphic Operator Interface Terminals



INFRARED SENSORS

Infrared Thermometers / Infrared Cameras / Handheld Thermometers /
Thermal Imagers / PIX Connect Software



THERMOCOUPLES AND RTD ASSEMBLIES

Single and Dual Element Sensors, 3A Sanitary Assemblies,
Precision Grade 2 Wire Transmitters, Bi-Metal Thermometers, Thermowells.



OPERATOR HMI PANELS

Operator HMI panels with or without I/O modules integrated or pluggable I/O,
Protocol converters, Analog and Digital I/O modules and power supplies



PREMIUM SENSING SOLUTIONS

High Accuracy Pressure Transducers, Transmitters, Gauges, Power Monitoring,
Power Meters, Humidity, Particle Counting, Modular Pressure Calibration.



THE STRONGEST LINK

INTRINSICALLY SAFE PRODUCTS for HAZARDOUS LOCATIONS

Intrinsically Safe Barriers and Isolators, Motor Starters, Breaker
Panels, Terminal Boxes and Hazardous Area Control Panels.



AN AMPHENOL COMPANY

LIQUID LEVEL SENSING

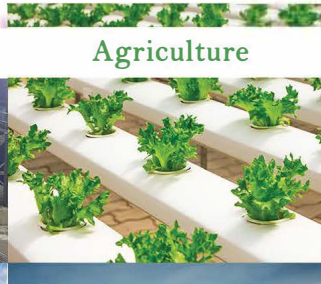
Tank Gauging System Utilizing Magnetostrictive Technology to
Provide Indication and Transmission of Liquid Levels.



Additive Manufacturing



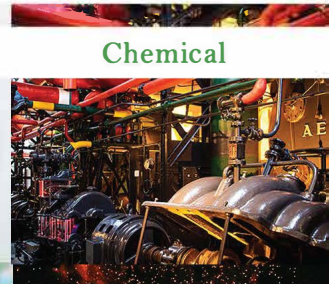
Aggregate



Agriculture



Bioprocess



Chemical



Construction



Energy



Field Service



Food & Beverage



Heat Treating

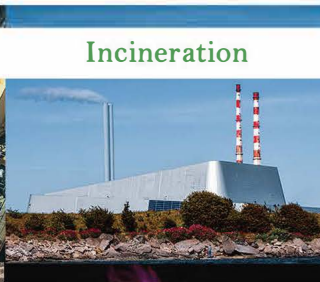
Thermocouples & RTD Assemblies
Temperature and Process Control
Remote Temp/RH Monitoring
Infrared Pyrometers / Imagers
Programmable Logic Computers (PLC)
Human Machine Interface (HMI)
Data Acquisition
Panel PCs
Alignment Sensors

Process Weighing, Batching
Load Cell Systems & Scales
Industrial I/O
Explosion Protection
DC-UPS
Circuit Breakers
Terminal Blocks
Calibrators
Speed Monitoring

Liquid Level
Mass Flow
Pressure Monitoring
Position Transducers
String Pots
Industrial Computers
Power Supplies
Enclosures
Signal Conditioning



HVAC



Incineration



Laboratory



Manufacturing



Medical



Mining & Metals



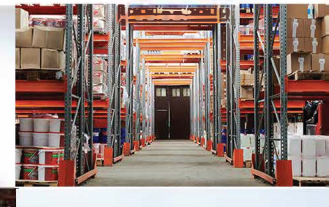
Oil & Gas



Pharmaceutical



Plastics



Warehousing



Textiles



Utilities



System Integrators



Transportation



Water / Wastewater

Who We Are

Finn & Conway is a leading Manufacturer's Representative of industrial process equipment. We have a reputation for providing intensive sales and marketing coverage for our principals and a high level of technical application engineering assistance for our customer base. Dedication to complete customer satisfaction is the defining character of Finn & Conway.

Our principals have been carefully selected to provide leading edge, world class products. Each of them has demonstrated performance and leadership in their special field. We serve clients throughout the Midwest, specifically **Illinois, Indiana, Iowa, Minnesota, Missouri, North Dakota, Ohio, South Dakota, and Wisconsin.**

However, we are more than a Manufacturer's Representative. We realize that our customers are purchasing "solutions" and not just hardware or software. Therefore, we offer application assistance, training, on-site installation assistance, calibration and repair services, and local stock to meet critical delivery situations.

We will always strive to provide our valued principals the very best in sales representation. There are no short cuts. Hard work, dedication and excellence in performance are absolute musts.

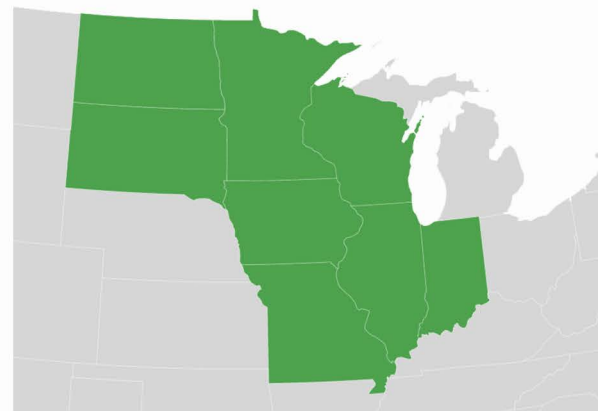
"The most important line we will ever have is our reputation and we guard it above all else."

Finn & Conway, Inc. (HQ)

7524 98th Place

Bridgeview, IL 60455

www.finnandconway.com



Toll Free: 1.888.599.0103

E-Mail: sales@finnandconway.com



MEMBER IN GOOD STANDING
MANA
Manufacturers & Agents
PROFESSIONAL PARTNERS IN PROFITS

